

Crane **FB63T** & Trailer **FB9**

FOR EASY AND EFFICIENT WORK IN THE FOREST



NEW MODEL PRESENTATION

General overview and main characteristics

2012.12

- Crane FB63T -

New design based on time proven solutions

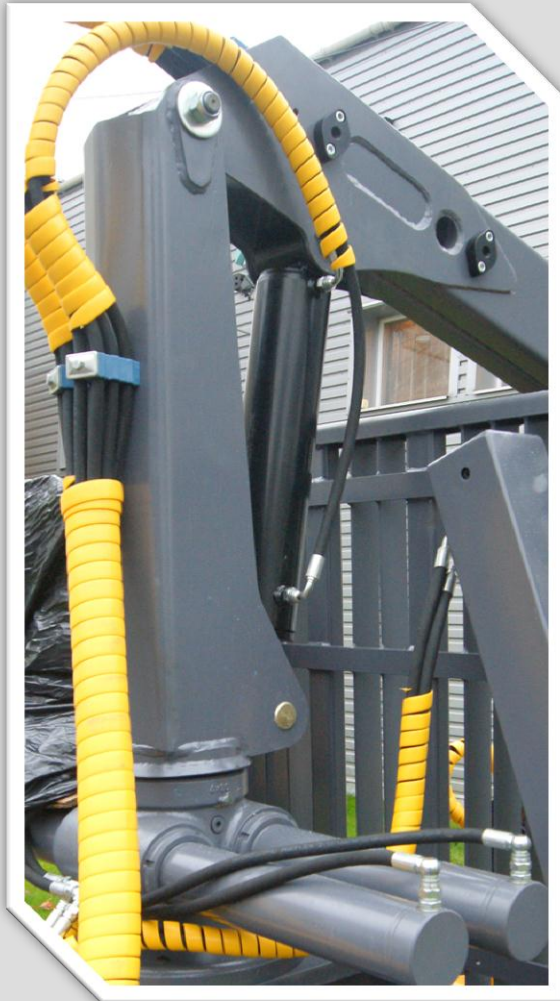
Crane BF63T is the newest model in Källefäll products range and is more powerful and lightweight than its predecessors like KF310&KF400 thanks to new design and proven concept.

MAIN CHARACTERISTICS:

- *Reach – 6.3m;*
- *Telescope – yes;*
- *Lift torque (netto) – 29 kNm;*
- *Lift capacity at max reach (netto) - 450kg;*
- *Slew motor – double, die-cast housing;*
- *Slew torque – 8.5 kNm;*
- *Slew angle - 360°;*
- *Weight (w/o grapple, rotator & valve) ~ 550kg;*

- Crane FB63T -

STRENGTHS AND ADVANTAGES



- KEY FEATURES -

- ✓ New pillars' design – more rigid & lightweight with less parts & welds;
- ✓ Lift cylinders' orientation ensures well protection from accidental rods' damage;
- ✓ New type die-cast iron slew motor with bronze/roll bearings & bigger mesh modulus ensures high durability & fault-free operation even at heavy duty conditions;
- ✓ Lift arm allows different type winch fixation;

- Crane FB63T -

STRENGTHS AND ADVANTAGES



- KEY FEATURES -

- ✓ New lift arms' design – conical shape allows to lessen number of parts and welds, while the weight is reduced;
- ✓ Steel cover on the top of a second arm ensures max. protection for the hydraulic hoses from accidental damage;
- ✓ High quality & strength DOMEX steel used in product;

- Crane FB63T -

STRENGTHS AND ADVANTAGES

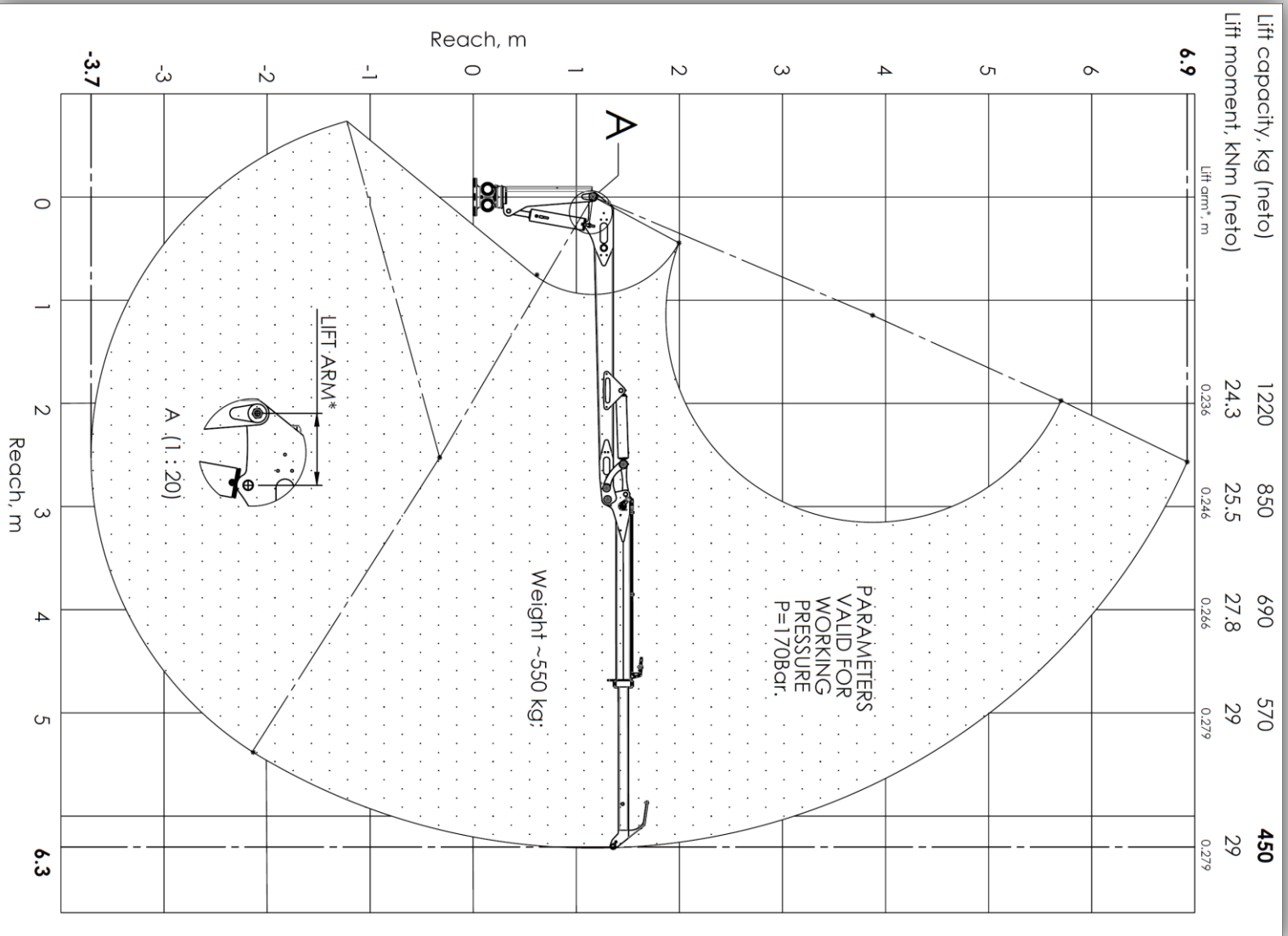


- KEY FEATURES -

- ✓ Improved link system – links are made from thicker material, wider bushings are used in joints;
- ✓ New telescope arms' design allows for easy & fast hydr. hose & cylinder dis/connection for exchange or service;
- ✓ Protection sleeve ensures better protection for the hydraulic hoses from possible damage;
- ✓ Crane is equipped with New model grapples FB160 / FB190;

- Crane FB63T -

LIFT CAPACITY / REACH DIAGRAM



- Trailer FB9 -

Trailer FB9 is the well known Källefäll model KF90, proven to be strong and durable, but improved for even longer fault-free operation to meet customers needs.

- KEY FEATURES -

- ✓ Improved bogie holder – wider bushings are used in main joints for increased durability;
- ✓ New “clear” design lessens number of parts and welds on bank & bogie holder and reduces the weight;
- ✓ New type support legs fixed slightly wider for better stability and are more lightweight;

