

KÄLLEFALL

FOREST TRAILERS AND CRANES

SWEDISH DESIGN FOR MODERN FORESTRY





KF70/KF200

Trailer KF70 has 7 tons load capacity and is the entry model in Källefäll product range. Together with a crane KF200, this trailer is suitable for transporting pulpwood, smaller loads of timber and wood. It is equipped with a 11,5x15,3 sized wheels, central beam frame, steady crane base, gate and a sturdy bogie. The trailer is also equipped with a frame-steering, telescopic support legs, hydraulic brakes (for two axles), moveable stakes and can be supplied with a "down", "up" or "straight" drawbar. Additional bunks, hydr. brakes (for four axles), tail lights, toolboxes, operators' platform and alternative wheels are available as options.



KF90/KF310

Trailer KF90 has 9 tons load capacity and is the middle size model in Källefäll product range. Together with a crane KF300 or KF310, this trailer is suitable for transporting wood/timber and is designed for those, who need a reliable and well-equipped machine for work in the forest. Standard equipment includes tires 400x15,5, frame steering, toolboxes, telescopic support legs with well protected inner cylinders, hydraulic brakes (for two axles), moveable stakes and can be supplied with a "down", "up" or "straight" drawbar. Trailer also has a central beam frame, large gate, steady crane base and reliable bogies. Additional bunks, hydr. brakes (for four axles), pneumatic brakes, independent hydraulic pump and tank system, tail lights, mechanical frame extension, operators' platform and alternative wheels are available as options.



KF100/KF400

Trailer KF100 has 10 tons load capacity and is the biggest model in Källefäll product range. This is the most powerful Källefälls' heavy-duty rig, designed for intensive use and most types of forestry transportation needs. Together with a crane KF400, trailer is used by professionals and forest owners who carry out most of their forestry work independently. This model is equipped with 8 stakes, extra strong frame-structured bogies, powerful gate with a steady crane base and a steering coupling located behind the gate for excellent steering action and stability. Standard equipment includes tires 400x15,5, frame steering, toolboxes, telescopic support legs with well protected inner cylinders, hydraulic brakes (for two axles) and can be supplied with a "down", "up" or "straight" drawbar. Additional bunk with stakes, hydr. brakes (for four axles), pneumatic brakes, independent hydraulic pump and tank system, operators' platform and alternative wheels are available as options.

| TRAILERS | KF70 | KF90 | KF100 |
|---------------------------|---------|---------|---------|
| Load area, m ² | 1,9 | 2 | 2,2 |
| Load capacity, kg | 7000 | 9000 | 10000 |
| Clearance, mm | 450 | 550 | 550 |
| Load length, m | 3,7 | 3,7 | 3,8 |
| Central beam dim., mm | 140x140 | 160x160 | 160x160 |
| Axles dim., mm | 60x60 | 70x70 | 70x70 |

STANDARD

| | | | |
|-----------------------------|---------|----------|----------|
| Hydraulic frame steering | yes | yes | yes |
| Hydraulic support legs | yes | yes | yes |
| Stakes (2/bunk), pc. | 6 | 6 | 8 |
| Toolboxes (2pc.) | no | yes | yes |
| Wheels dim. | 11,5x15 | 400x15,5 | 400x15,5 |
| Tail lights | no | no | yes |
| Drum brakes (for two axles) | yes | yes | yes |

EXTRA

| | | | |
|---|----------------------|----------------------|----------------------|
| Toolboxes (2pc.) | yes | standard | standard |
| Extra bunk with 2 stakes | yes | yes | yes |
| Tail lights (magnetic fix. on the last bunk) | yes | yes | standard |
| Tail lights (integrated in to the last bunk) | no | yes | standard |
| Drum brakes (for four axles) | yes | yes | yes |
| Pneumatic brakes | yes | yes | yes |
| Alternative wheels | 14,00x16 400x15,5 | 400x15,5 Traction | 400x15,5 Traction |
| Operators' platform | yes | yes | yes |

CRANES

STANDARD

| | KF200 | KF300 | KF310 | KF400 |
|---|---------------------------------------|---------------------------------------|---------------------------------------|---------------------------------------|
| Outreach, m | 4,7 | 5,1 | 6,3 | 6,3 |
| Telescope | no | no | yes | yes |
| Lift torque, kNm | 24 | 30 | 30 | 36 |
| Lift capacity at max. outreach (netto), kg | 435 | 500 | 365 | 425 |
| Oil flow required, l/min. | 15-35 | 30-50 | 30-50 | 40-60 |
| Working pressure required, bar | 170 | 170 | 170 | 170 |
| Slew motor, type | Single cylinder | Double cylinder | Double cylinder | Double cylinder |
| Slewing torque, kNm | 3,65 | 7,3 | 7,3 | 8,5 |
| Slewing angle, ° | 360° | 360° | 360° | 360° |
| Rotator's link, type | without pending brake | with pending brake | with pending brake | with pending brake |
| Grapple, type | KG180 | KG180 | KG180 | KG190 |
| Rotator, type | GR30 | GR30 | GR30 | GR30 |
| Valve block, type | FRV 60/7 2-LEVER (2lever/3co-ord.) | FRV 60/7 2-LEVER (2lever/3co-ord.) | FRV 60/8 2-LEVER (2lever/3co-ord.) | FRV 60/8 2-LEVER (2lever/3co-ord.) |

EXTRA

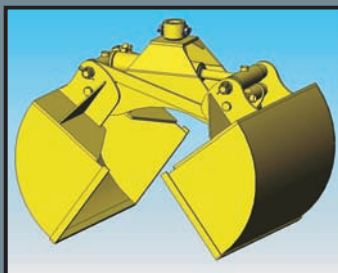
| | | | | |
|---------------------------------|-----|----------|----------|----------|
| Grapple KG190 | no | no | yes | standard |
| Winch KV1400 (manual control) | yes | yes | yes | yes |
| Remote control for winch | yes | yes | yes | yes |
| Slew motor with double cylinder | yes | standard | standard | standard |

ACCESSORIES

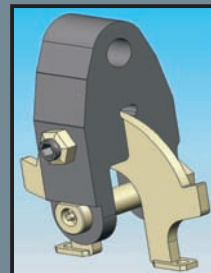
GRAPPLES



GRAPPLES WITH BUCKETS



LINKS



ROTATORS



WINCHES



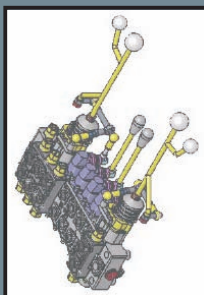
HYDRAULIC PUMPS



REMOTE CONTROL FOR WINCH



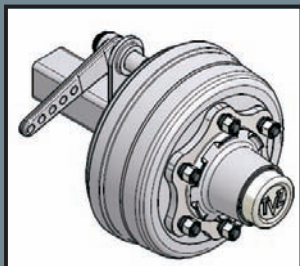
HYDRAULIC VALVES



BUNKS WITH STAKES



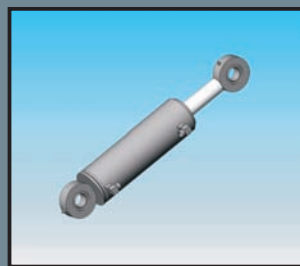
AXLES



TAIL LIGHTS



HYDRAULIC CYLINDERS



FOREST TECHNOLOGY GROUP

Dūmų str. 3, LT-11119, Vilnius
Ph. +370 5 2 462320
Fax. +370 5 2 462319
E-mail: info@ftgbaltic.lt
Web: www.ftgbaltic.lt



FOREST TECHNOLOGY GROUP

Member of The BRUKS Group **BRUKS**